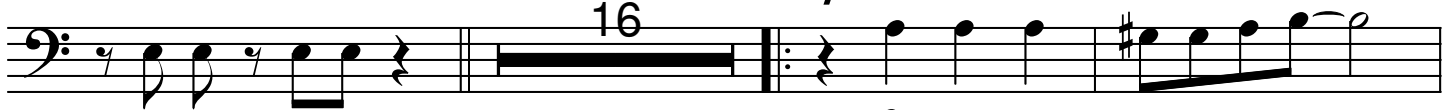


"Smooth"

Part 2



1 2 *f* 3 *sf* 4



5 *ff* 6 16 22 *f* 23



24 25 26 27 28

Solo or Together *To Coda*



29 30 31 32 33 E9

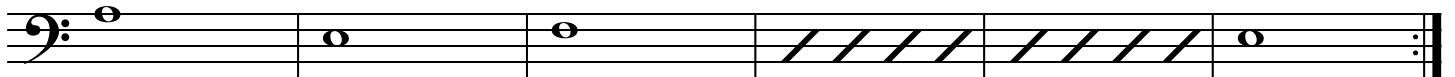


tutti

Amin

E9

34 Amin *f* 35 E9 36 F 37 Esus4 EMaj 38 Amin 39 E9 *D.S. al Coda*



40 41 42 43 44 45

Coda



46 47 48



49 50 51 52

"Smooth"

Part 2

Musical score for Part 2 of "Smooth". The score is written in treble clef with a key signature of two sharps (F# and C#) and a common time signature (C). It consists of six staves of music. The first staff contains measures 1, 2, and 4. The second staff contains measures 5, 6, 22, and 23. The third staff contains measures 24, 25, 26, 27, and 28. The fourth staff contains measures 29, 30, 31, 32, and 33. The fifth staff contains measures 34, 35, 36, 37, 38, and 39. The sixth staff contains measures 40, 41, 42, 43, 44, and 45. The score includes various dynamics such as *f*, *ff*, and *S/3*. It also features a 16-measure rest in measure 6 and a double bar line with repeat dots in measure 32. The piece concludes with the instruction *D.S. al Coda*.

1 2 *f* 4 *S/3*

5 *ff* 6 22 *f* 23

24 25 26 27 28

29 30 31 32 33 *Solo or Together To Coda*
Bmin F#9

34 *f* 35 36 37 38 39
Bmin F#9 G F#sus4 F#Maj Bmin F#9

40 41 42 43 44 45

D.S. al Coda

Coda

Musical score for the Coda section. It consists of two staves of music. The first staff contains measures 46, 47, and 48. The second staff contains measures 49, 50, 51, and 52. The score concludes with a double bar line and repeat dots in measure 52.

46 47 48

49 50 51 52

"Smooth"

Part 2

1 2 *f* 3 *sf* 4

5 *ff* 6 16 22 *f* 23

24 25 26 27 28 *Solo or Together To Coda*

29 30 31 32 *tutti* 33 *Amin* E9

34 *Amin f* 35 E9 36 F 37 Esus4 EMaj 38 *Amin* 39 E9 *D.S. al Coda*

40 41 42 43 44 45

Coda

46 47 48

49 50 51 52

"Smooth"

Part 2

1 2 *f* 3 4

5 *ff* 6 16 *sf*³ 22 *f* 23

24 25 26 27 28

29 30 31 32 Solo or Together *To Coda*

33 *tutti* *f* *F#min* *C#9*

34 *F#min* 35 *C#9* 36 *D* 37 *C#sus4C#Maj* 38 *F#min* 39 *C#9*

40 41 42 43 44 45

D.S. al Coda

Coda

46 47 48

49 50 51 52

"Smooth"

Part 2

1 2 *f* 3 4

5 *ff* 6 16 22 *f* 23

24 25 26 27 28

29 30 31 32 33 *Solo or Together* *To Coda*

34 *tutti* 35 36 37 38 39

Emin *f* B9 C Bsus4 BMaj Emin B9

40 41 42 43 44 45

D.S. al Coda

Coda

46 47 48

49 50 51 52

"Smooth"

Part 2 / Oboe

1 2 *f* 3 *sf* 4

5 *ff* 6 16 22 *f* 23

24 25 26 27 28 *Solo or Together To Coda*

29 30 31 32 33 *Amin* *E9*

34 *tutti* *f* 35 *E9* 36 *F* 37 *Esus4 EMaj* 38 *Amin* 39 *E9 D.S. al Coda*

40 41 42 43 44 45

Coda

46 47 48

49 50 51 52